

# EUCALYPTUS

50 FT. DIAMETER

5/8 SPHERE AND

3847 TOTAL SQ. FT.

33 FT. HIGH

3 FT. RISER WALL

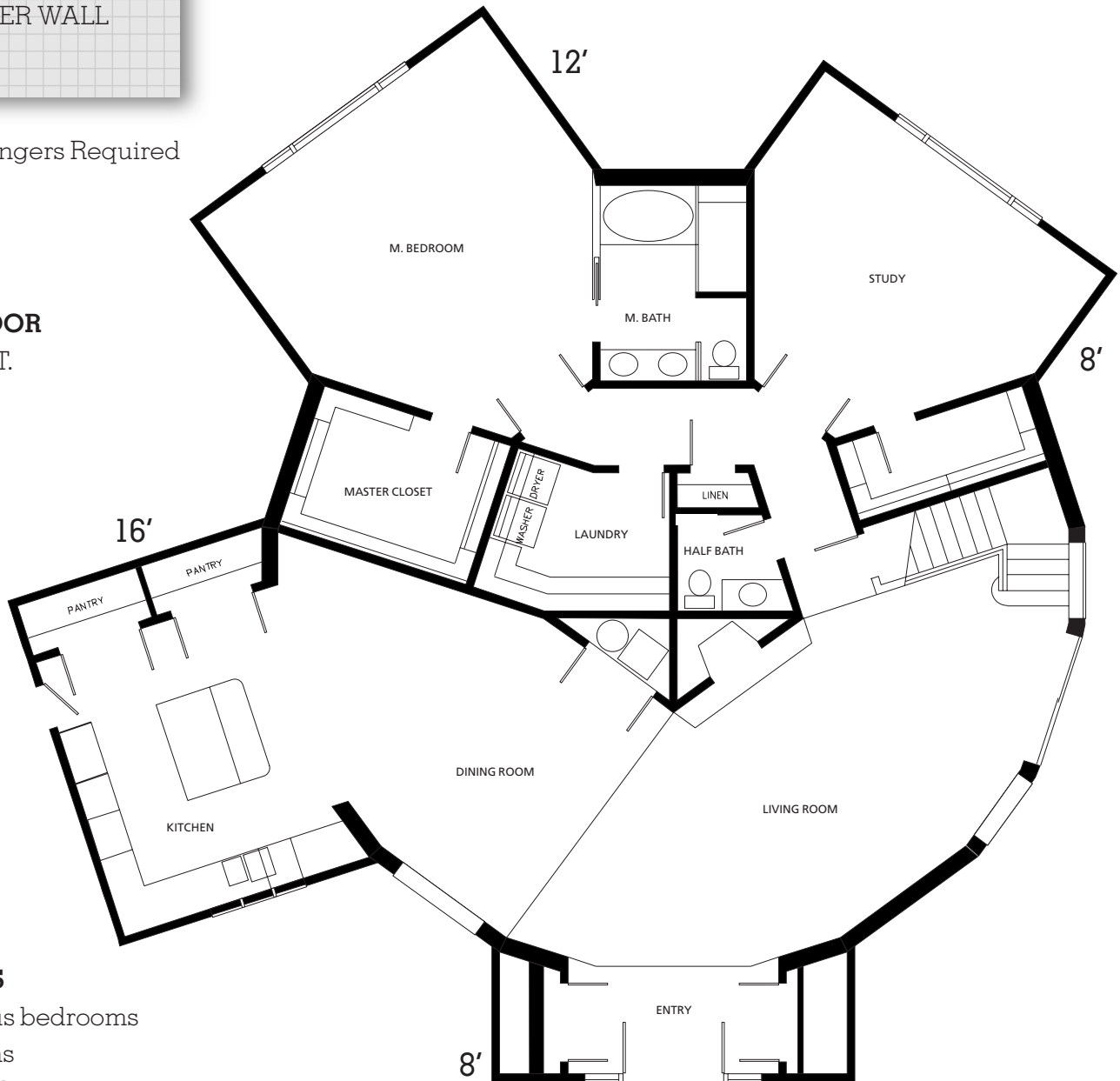
Ledger Hangers Required

4" x 12"

10 Full

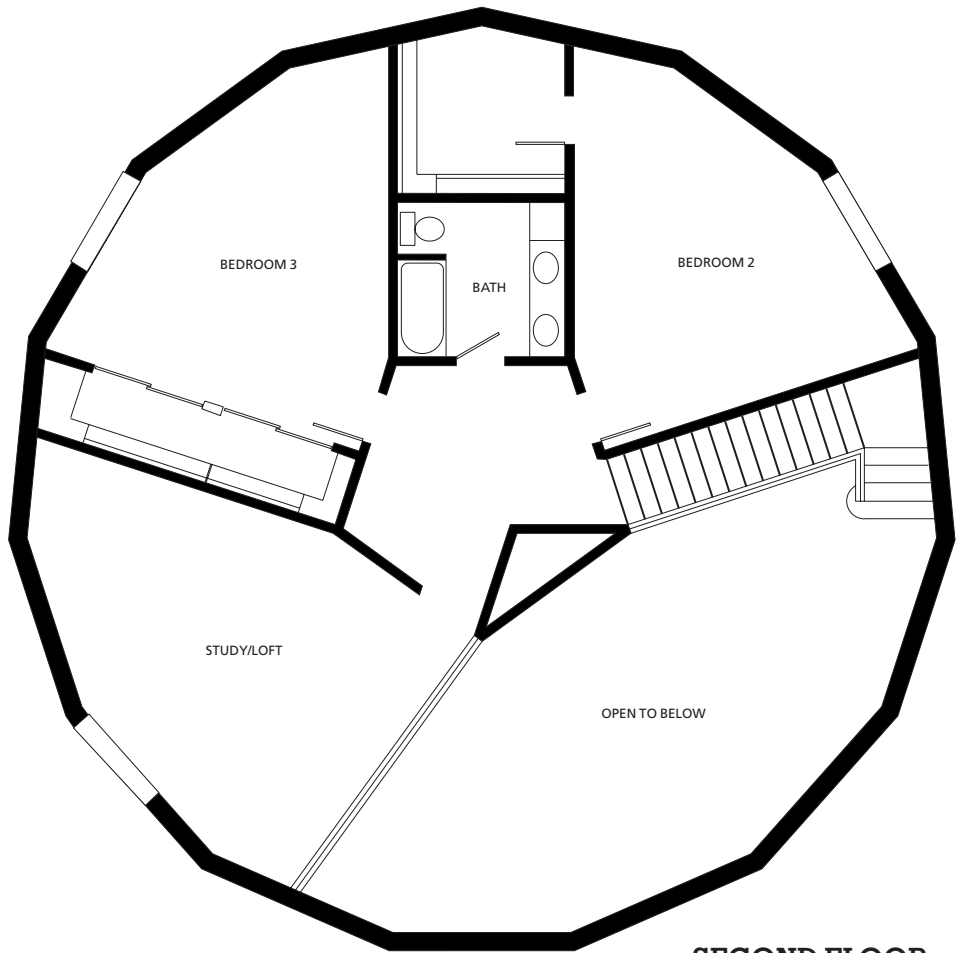
## FIRST FLOOR

2628 SQ. FT.



## FEATURES

- 3 spacious bedrooms
- 2 1/2 baths
- Walk-in closets
- Balcony overlooking living room
- Distinct living and dining rooms
- Downstairs master suite
- Center island in large kitchen
- Study



**SECOND FLOOR**

1219 SQ. FT.

1" = 10 FT.

